

---

# MUNICIPALITY OF SOUTH BRUCE



## COMMUNITY PROFILE

For More Information Contact:

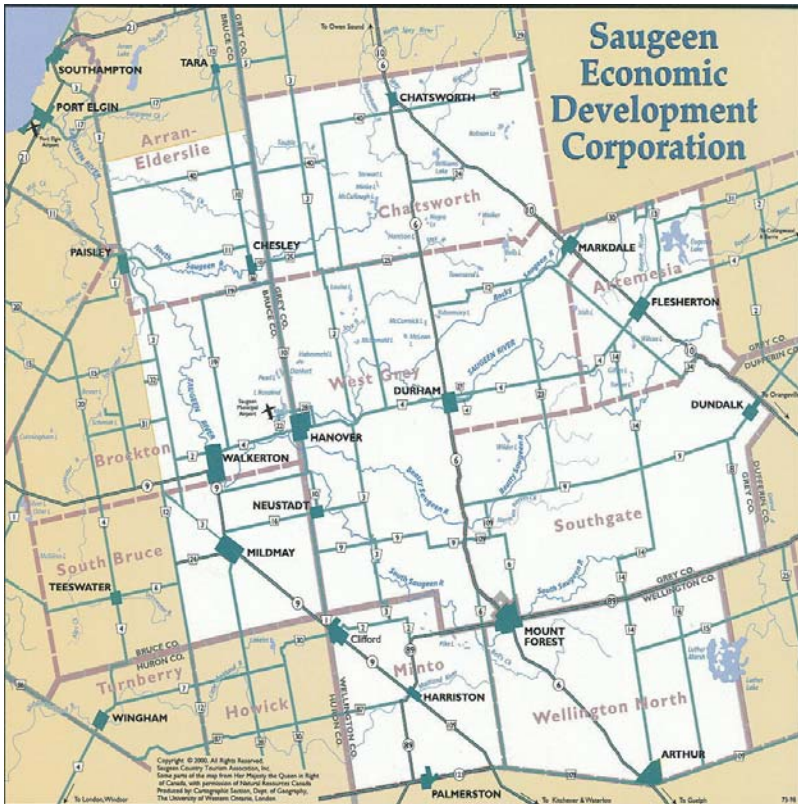


**SAUGEEN**  
ECONOMIC DEVELOPMENT CORPORATION  
A Community Futures Development Corporation  
554 7<sup>th</sup> Avenue, Hanover, Ontario, N4N 2J7  
Tel (519) 364-3694 Fax (519) 364-6384  
[www.sbdc.ca](http://www.sbdc.ca)



# LOCATION

The Municipality of South Bruce is located in the southeastern corner of Bruce County, adjoining at the Grey County and Huron County borders. The Municipality contains some of the best farmland the County has to offer. South Bruce is a short drive on excellent roads to the Lake Huron shore and is within a one hour drive from Owen Sound, the Grey-Bruce Region's largest centre.



Highway Distances from the Municipality of South Bruce to Major Centres (in kilometres and miles)

	km	miles
Windsor/Detroit.....	340	210
Sarnia/Port Huron.....	205	125
London.....	140	85
Kitchener.....	100	60
Hamilton.....	160	100
Fort Erie/Buffalo.....	255	160
Toronto.....	175	110
Oshawa.....	220	135
Ottawa.....	575	355
Montreal.....	720	445

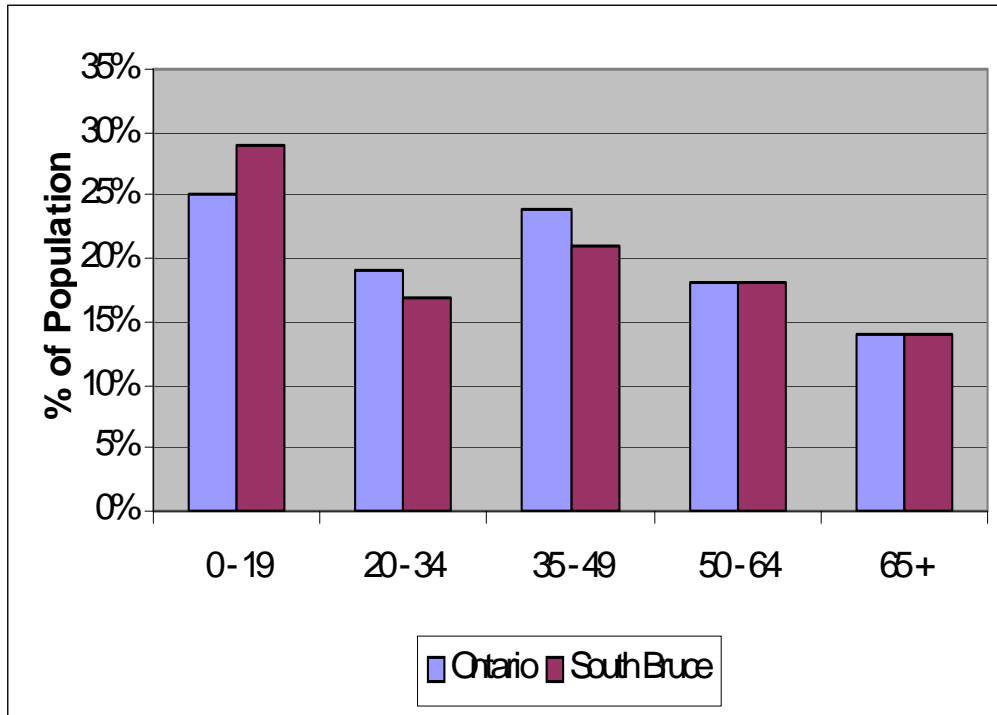
South Bruce is within 1 ½ hours of Highways #400 and #401, the Province's main controlled-access thoroughfare and link between major centres in Canada and the United States. In addition, the community is close to the Saugeen Municipal Airport. Owen Sound also offers Great Lakes port and shipping facilities, as does the Town of Goderich situated approximately 85 kilometres to the southwest.

# POPULATION

## POPULATION BY FIVE-YEAR AGE GROUPS AND GENDER

Age Group	Both Genders	Male	Female
0 - 4	355	175	180
5 - 9	380	200	180
10 - 14	490	250	240
15 - 19	515	265	250
20 - 24	415	220	195
25 - 29	320	165	155
30 - 34	290	145	145
35 - 39	335	165	170
40 - 44	435	215	220
45 - 49	495	250	245
50 - 54	435	230	205
55 - 59	385	200	185
60 - 64	270	145	125
65 - 74	485	245	240
75+	320	150	170
<b>Total Pop</b>	<b>5,935</b>	<b>3,020</b>	<b>2,920</b>

## POPULATION COMPARISON TO ONTARIO BY AGE GROUP



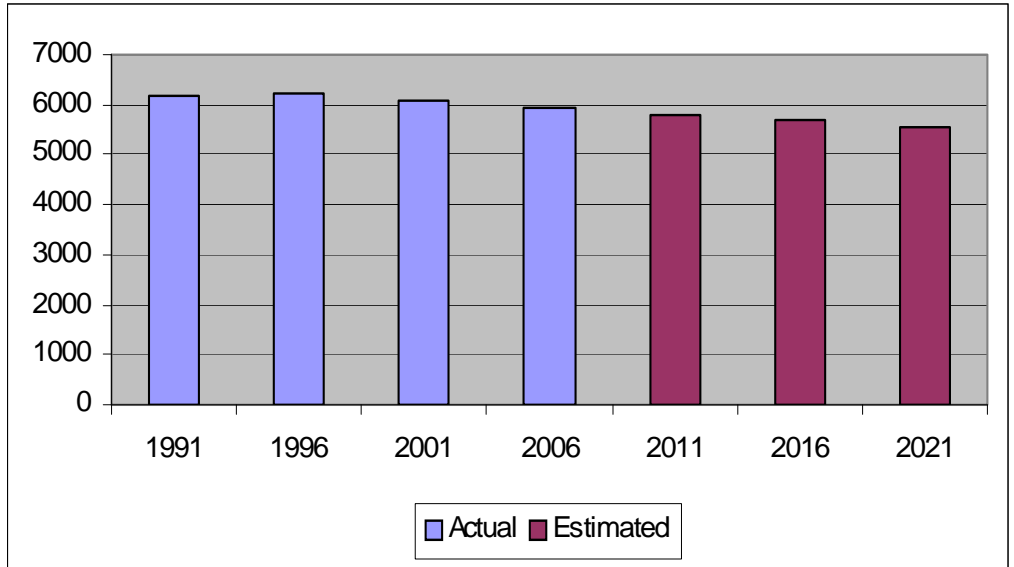
Source: Statistics Canada 2006 Census

---

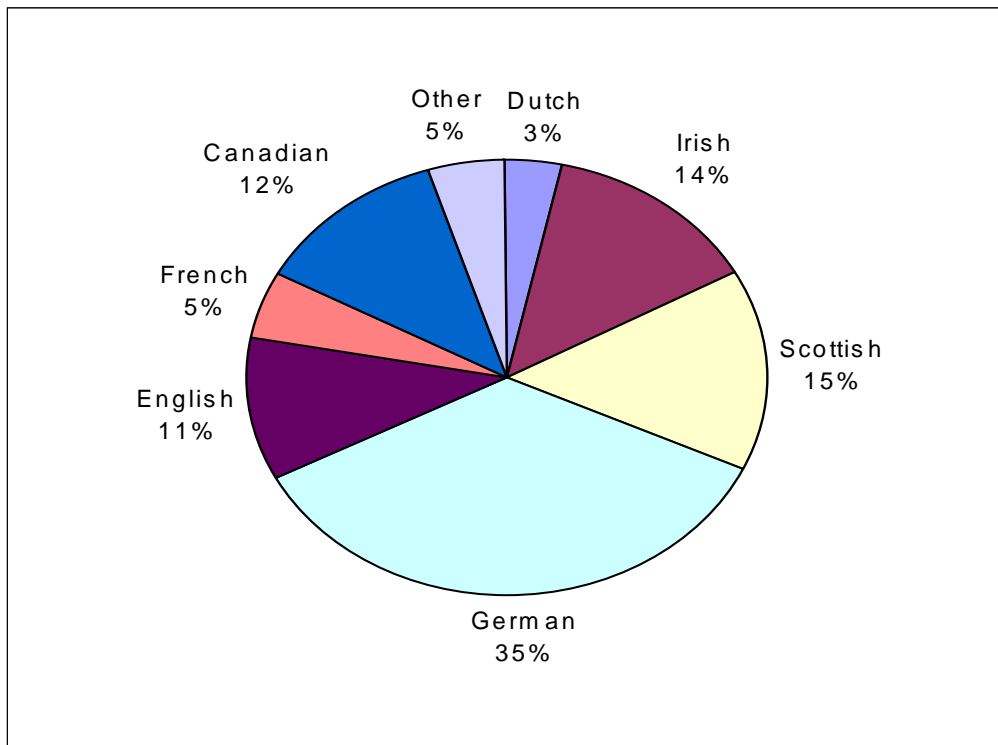
# POPULATION

## POPULATION GROWTH

1976.....	6,278
1981.....	6,024
1986.....	5,857
1991.....	6,178
1996.....	6,248
2001.....	6,063
2006.....	5,935
2011.....	5,810 est.
2016.....	5,687 est.
2021.....	5,567 est.



## ETHNIC ORIGIN



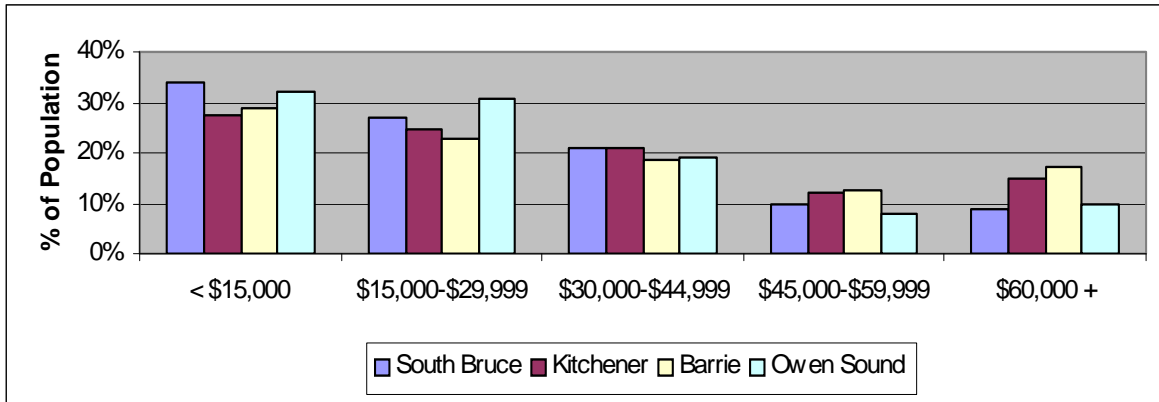
---

Source: Statistics Canada 2006 Census

# INCOME

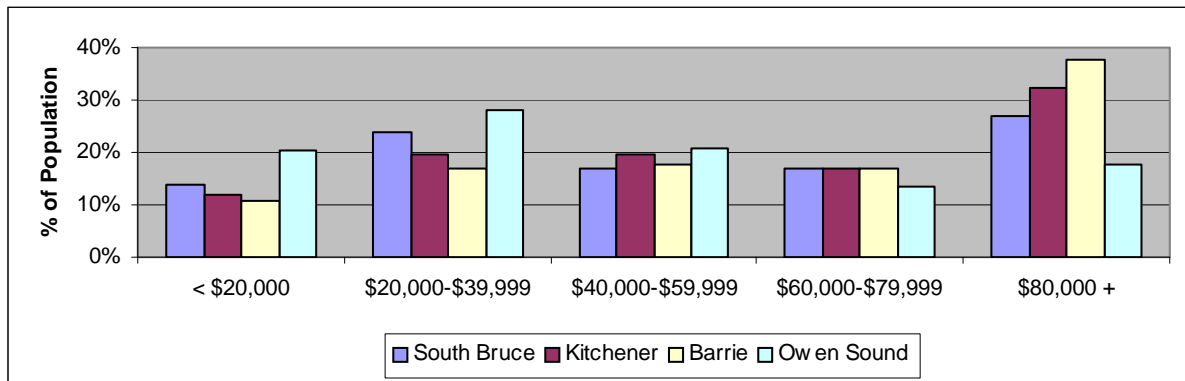
## TOTAL INCOME BY GENDER AND INCOME GROUP

Income Group	Number of People					
	South Bruce		Kitchener	Barrie	Owen Sound	
	Male	Female	Total	Total	Total	Total
Under \$15,000	660	890	1,550	43,125	27,430	5,390
\$15,000 - \$29,999	565	645	1,210	39,065	21,680	5,155
\$30,000 - \$44,999	535	410	945	32,880	17,610	3,215
\$45,000 - \$59,999	250	205	450	19,230	12,135	1,365
\$60,000 and over	325	90	415	23,390	16,485	1,655
15+ with income	2,335	2,230	4,560	157,710	95,340	16,785
<b>Average Income</b>	<b>\$34,123</b>	<b>\$23,619</b>	<b>\$28,995</b>	<b>\$35,648</b>	<b>\$35,737</b>	<b>\$29,093</b>



## HOUSEHOLD INCOME DISTRIBUTION

Income Level	Number of Households			
	South Bruce	Kitchener	Barrie	Owen Sound
Under \$20,000	300	9,520	4,935	1,925
\$20,000 - \$39,999	510	15,460	7,955	2,620
\$40,000 - \$59,999	375	15,510	8,315	1,950
\$60,000 - \$79,999	375	13,445	7,835	1,245
\$80,000 and over	590	25,540	17,480	1,655
Total	2,155	79,485	46,515	9,380
<b>Average Income</b>	<b>\$61,379</b>	<b>\$70,620</b>	<b>\$73,134</b>	<b>\$51,952</b>





# LABOUR

## LABOUR FORCE 15 YEARS AND OVER BY INDUSTRY DIVISIONS

Industry Division	Total	% of Workforce	
		South Bruce	Ontario
Agriculture, Forestry Fishing and Hunting	615	17.2	1.7
Manufacturing	650	18.2	13.7
Construction	355	9.9	5.8
Retail Trade	360	10.1	10.9
Health Care and Social Assistance	265	7.4	9.3
Other Services (Except Public Administration)	125	3.5	4.6
Wholesale Trade	170	4.7	4.7
Transportation and Warehousing	130	3.6	4.7
Accommodation and Food Services	230	6.4	6.3
Educational Services	190	5.3	6.6
Professional, Scientific and Technical Services	55	1.5	7.2
Utilities	90	2.5	0.8
Public Administration	45	1.3	5.3
Finance and Insurance	100	2.8	4.8
Administrative, Support, Waste Management and Remediation Services	80	2.2	4.8
Arts, Entertainment and Recreation	40	1.1	2.1
Information and Cultural Industries	40	1.1	2.6
Management of Companies and Enterprises	0	0.0	0.1
Mining and Oil and Gas Extraction	15	0.4	0.4
Real Estate and Rental and Leasing	20	0.6	1.9
<b>Total Labour Force</b>	<b>3,580</b>	<b>100.0</b>	<b>100.0</b>

## LABOUR FORCE 15 YEARS AND OVER BY OCCUPATION AND GENDER

Occupation	Male	Female	Total
Trades, Transport and Equipment Operators and Related Occupations	695	60	755
Occupations Unique to Primary Industry	435	215	650
Sales and Service Occupations	250	555	805
Occupations Unique to Processing, Manufacturing and Utilities	290	135	430
Business, Finance and Administration Occupations	75	285	360
Management Occupations	90	80	170
Health Occupations	15	140	155
Social Science, Education, Government Service and Religious Occupations	35	120	155
Natural and Applied Sciences and Related Occupations	45	0	45
Occupations in Art, Culture, Recreation and Sport	15	35	50
<b>Total Labour Force</b>	<b>1,950</b>	<b>1,630</b>	<b>3,580</b>

Source: Statistics Canada 2006 Census



---

# LABOUR

## Occupations and Wage Rates

The following is a list of prevailing wage rates for standard occupations determined by the Service Canada for the Grey-Bruce-Simcoe-Muskoka area, as of December 31, 2007. These wage rates are to be considered as guidelines only and specific information should be obtained from individual employers. Please note that current minimum wage in Ontario may not be reflected in this data.

<u>Occupation</u>	<u>Prevailing Wage Range</u>		<u>Average</u>
Accounting and Related Clerks	\$12.00	\$23.42	\$17.07
Administrative Clerks	\$11.50	\$24.31	\$16.99
Automotive Mechanical Installers and Servicers	\$8.75	\$19.50	\$12.25
Bookkeepers	\$11.00	\$20.85	\$15.38
Carpenters	\$13.00	\$30.80	\$19.91
Construction Trades Helpers and Labourers	\$12.00	\$26.80	\$17.05
Cooks	\$8.75	\$16.77	\$11.41
Data Entry Clerks	\$11.01	\$23.82	\$18.04
Dental Assistants	\$15.00	\$25.16	\$17.91
Early Childhood Educators and Assistants	\$9.25	\$20.07	\$13.60
Electricians (Except Industrial and Power System)	\$12.50	\$35.00	\$21.65
Elementary School and Kindergarten Teachers	\$18.83	\$39.16	\$28.71
Food and Beverage Servers	\$7.60	\$13.65	\$9.50
General Office Clerks	\$11.00	\$22.54	\$16.10
Heavy Equipment Operators	\$15.00	\$31.00	\$20.76
Industrial Electricians	\$20.16	\$37.00	\$25.88
Janitors, Caretakers and Building Superintendents	\$9.55	\$19.90	\$14.65
Manufacturing Managers	\$17.14	\$41.26	\$27.89
Material Handlers	\$11.50	\$20.60	\$15.53
Nurse Aides, Orderlies and Patient Service Associates	\$11.80	\$20.34	\$16.32
Plumbers	\$13.00	\$29.55	\$19.84
Receptionists and Switchboard Operators	\$10.00	\$19.08	\$13.98
Registered Nurses	\$22.50	\$40.00	\$32.12
Restaurant and Food Service Managers	\$10.72	\$20.12	\$13.72
Roofers and Shinglers	\$12.30	\$22.13	\$17.35
Secondary School Teachers	\$19.01	\$41.69	\$29.37
Shippers and Receivers	\$10.00	\$18.96	\$14.46
Truck Drivers	\$13.33	\$22.50	\$17.48
Welders and Related Machine Operators	\$12.88	\$22.53	\$17.49

---

For The Municipality of South Bruce business directory, please visit their web site at [www.town.southbruce.on.ca](http://www.town.southbruce.on.ca).

## TRAINING AND EMPLOYMENT ASSISTANCE

### Service Canada/Ministry of Training, Colleges and Universities (MTCU)

<http://www.ontario.ca/en/gic/004897>

#### Services available at this location:

- Answers to frequently asked questions about government services
- Referrals to government staff who can provide specialized help
- Access to government's Internet to search programs, services or staff
- Free government publications including Ontario Parks Guide, Fishing and Hunting Regulations, Power of Attorney Kits, etc
- Supply of and assistance with Application Forms for government services such as Birth and Death Certificates, Health Cards, Social Insurance Numbers, etc
- Order government publications electronically using POOL (Publications Ontario on-line), the Ontario government's virtual bookstore
- Access to Ontario Business Connects terminals or Web site to register/renew your business name, conduct a business name search and make your applications for Retail Sales Tax permit (RST), Employer Health Tax number (EHT) and register with the Workplace Safety and Insurance Board (WSIB)
- Access to [Life Events](#) information packages such as Losing Your Wallet and Getting Married
- Access to Online Government Services, including On-line Change of Address service
- Community Information and Bulletin Board
- File Landlord and Tenant Board applications
- Ministry of Labour Employment Standards Claim acceptance
- Ministry of Natural Resources Fish & Wildlife services, information and sales

For government services in Grey-Bruce call:  
1 888 647-3654 Toll Free  
(519) 371-6226  
(519) 371-6336 Fax

---

## TRAINING AND EMPLOYMENT ASSISTANCE

### **YMCA Employment Services**

425 10<sup>th</sup> Street, Hanover  
(519)364-3163

The YMCA Employment Services operating locally, provides free confidential employment counselling for both youth and adults. Located above the Canada Trust in Hanover, the program includes:

- a) A RESOURCE CENTRE offering free internet access, computers for word processing, job postings and newspapers.
- b) EMPLOYMENT COUNSELLORS who are available by appointment to help people identify career goals and offer support for a job search and assistance with resume preparation.
- c) ON THE JOB TRAINING for participants who meet program eligibility requirements.

### **Saugeen Business Development Centre**

554 7<sup>th</sup> Avenue, Hanover  
(519) 364-3694  
[www.sbdc.ca](http://www.sbdc.ca)

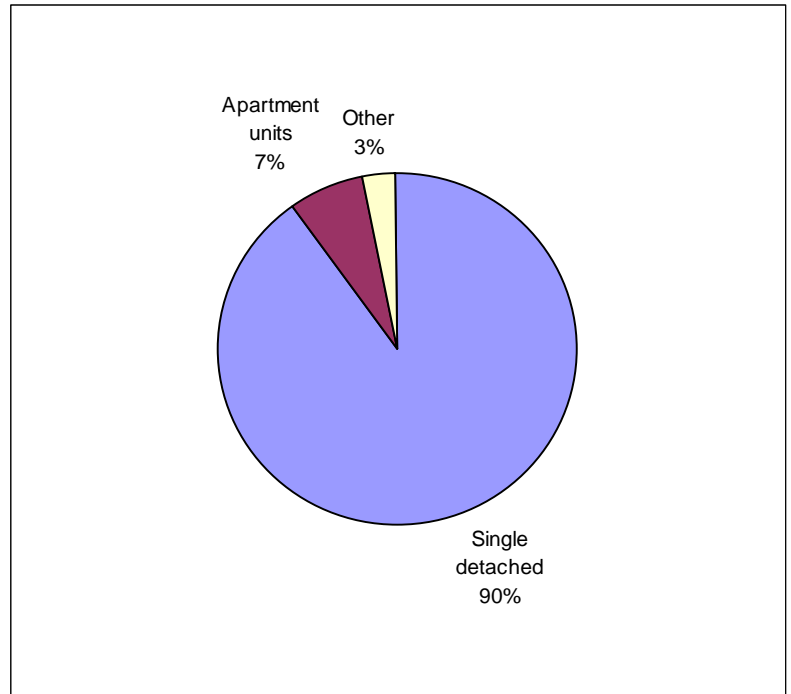
The Saugeen Business Development Centre is a federally supported not-for-profit Community Futures Development Corporation (CFDC) governed by volunteers in partnership with Industry Canada to help develop and diversify local economy by providing

- a) possible term loans up to \$150,000 for equipment, inventory, operating capital, etc;
- b) information related to demographics, labour market and training programs;
- c) information related to government programs and industrial sites;
- d) Community Profiles on participating municipalities; and
- e) quarterly economic newsletters.

# HOUSING AND CONSTRUCTION ACTIVITY

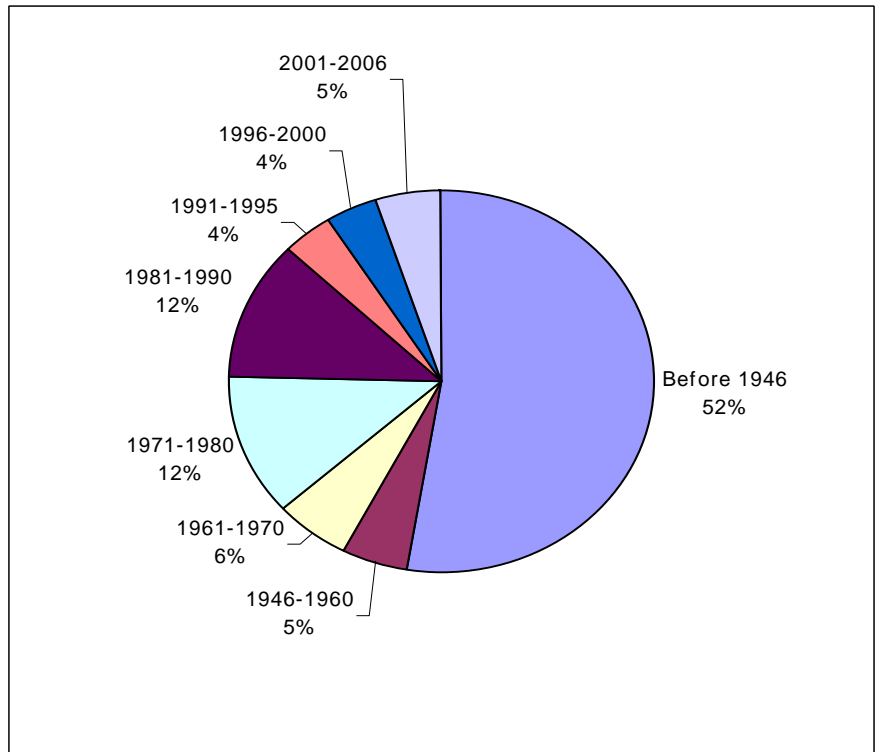
## HOUSING STOCK BY STRUCTURAL TYPE

Single-Detached		1,935
Semi-Detached		15
Row-Housing		35
Apartment, duplex		10
Apartment building, > 5 storeys		0
Apartment building < 5 storeys		140
Other single-attached house		10
Movable Dwellings		10
Total		2,155
Owned	1,775	
Rented		380



## HOUSING STOCK BY PERIOD OF CONSTRUCTION

Before 1946	1,135
1946-1960	110
1961-1970	120
1971-1980	255
1981-1990	255
1991-1995	90
1996-2000	85
2001-2006	100
Total	2,155

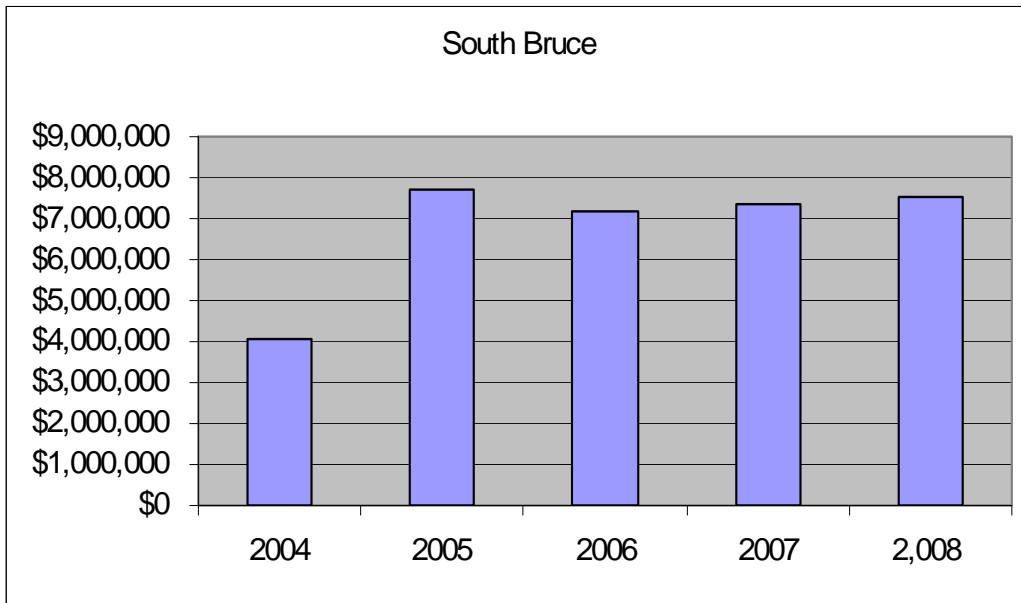


Source: Statistics Canada 2001

---

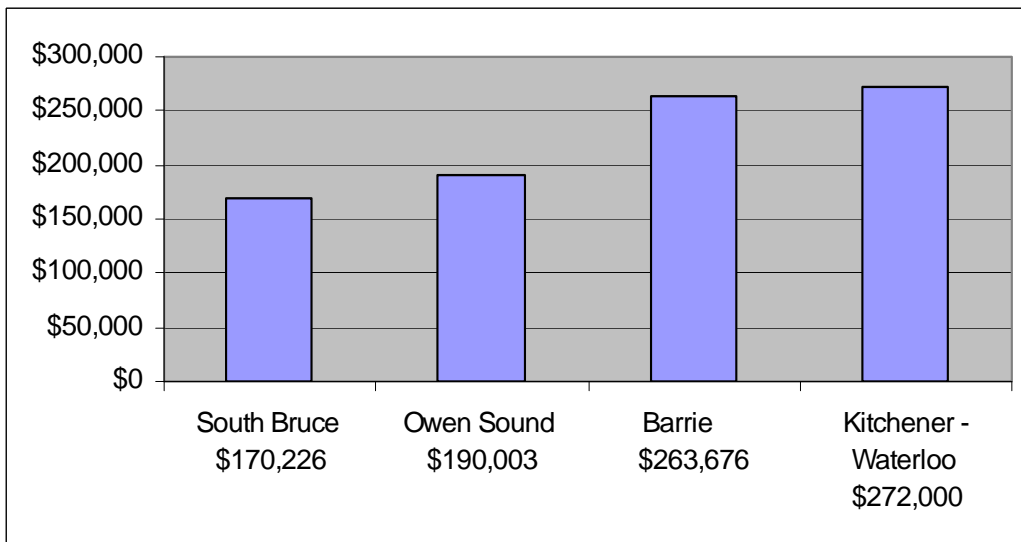
## HOUSING AND CONSTRUCTION ACTIVITY

### BUILDING PERMITS



Source: Survey of Municipal Offices

### AVERAGE RESIDENTIAL SELLING PRICE FOR 2008



Source: K-W Real Estate Board, Simcoe Real Estate Board and the Grey-Bruce-Owen Sound Real Estate Board

---

## LOCAL MUNICIPAL GOVERNMENT

### FORM OF GOVERNMENT

The Municipality of South Bruce is governed by an elected council consisting of a Mayor, a Deputy Mayor and five councillors elected for a three year term. The Mayor is elected at large, with three councillors elected from the Mildmay-Carrick ward and three councillors elected from the Teeswater-Culross ward. The Deputy Mayor position is decided upon by an internal ballot. Day-to-day operation of the municipal offices is carried-out by staff appointed by council. The municipality prepares an annual budget and financial statement which is available to taxpayers and other interested parties upon request, and is also available on the municipal website [www.town.southbruce.on.ca](http://www.town.southbruce.on.ca).

### TAX STRUCTURE

For further information, please contact the Municipality of South Bruce at (519) 392-6623. [www.town.southbruce.on.ca](http://www.town.southbruce.on.ca)

### LAW ENFORCEMENT

The Municipality of South Bruce is served by the Walkerton detachment of the Ontario Provincial Police. The nearest family, provincial and county court facility is located in nearby Walkerton.

### FIRE PROTECTION

Fire Departments are located in Mildmay and Teeswater. The Fire Departments also participate in the Bruce County Mutual Aid agreement and the Town of Walkerton Fire Department is available as a first response unit. The Mildmay-Carrick Department also participates in the County of Bruce Rescue System. Special rescue equipment has been located in Mildmay for use as necessary.

---

## POWER AND UTILITIES

### ELECTRICITY

The Municipality of South Bruce is served by two separate organizations. The rural areas are provided electricity by Hydro One. Westario provides service in the urban areas of Mildmay and Teeswater. For more information on Hydro One rates, please visit their web site at [www.hydroonenetworks.com](http://www.hydroonenetworks.com). For more information on Westario rates, please visit their web site at [www.westario.com](http://www.westario.com).

### WATER AND SEWER

The urban areas of Mildmay and Teeswater are serviced by water distribution systems. Rural residents are predominantly serviced by private wells. Mildmay is the only area of the municipality providing sewer service.

### GARBAGE AND INDUSTRIAL WASTE

Municipal waste pick-up is provided to Karlsruhe, Formosa, Mildmay and Teeswater and the built-up area south of Mildmay on a weekly basis. The former Carrick Township shares a landfill site with Mildmay and the former Culross Township shares a landfill site with Teeswater. The Municipality has adopted a Bag Tag policy to extend the lives of valuable landfill sites. Non-residents of the municipality and commercial waste collection agencies are charged a fee for the use of the site. Charges for municipal garbage collection are included in the taxes of those residents receiving the service. Garbage is collected by private operators contracted by the municipality. Recyclable materials are picked up bi-weekly.

---

## **INDUSTRIAL SERVICES**

### **SITES AVAILABLE**

For information on the availability of industrial land in The Municipality of South Bruce please contact the municipality at (519) 392-6623.

## **TRANSPORTATION**

### **AIR TRANSPORTATION**

The Saugeen Municipal Airport, located just outside Hanover on County Road #2, is key to the provincial airport network, offering quality service to both recreational and commercial traffic. Runway 01/19 is approximately 4,000 feet in length and 75 feet in width. The secondary runway 09/27 is approximately 2,500 feet in length and 50 feet in width. Both runways are maintained year round and service is available 365 days of the year between 9:00 a.m. and 5:00 p.m. The professionally maintained runways are capable of servicing and accommodating small to midsize corporate jets and larger commuter-type turbo-prop aircraft. Charters and flight training are available as well as food and catering Thursdays and Fridays. The Saugeen Municipal Airport also offers Canada Customs clearance on an as needed basis. For more information, phone (519) 364-3220, or fax (519) 364-7733.

The Wingham Municipal Airport is the newest addition to Wingham's transportation network. It is located one kilometre southeast of Wingham, on County Road #86. Runway 13/31 is asphalt and runs 4000 feet in length and 75 feet wide. The airport is unattended, but both airport and terminal are accessible 24 hours per day. Charters, sightseeing tours and flight training are just a few of the services available at the airport. Runway conditions and other information and services are obtainable by calling (519) 357-2645.

### **WATER TRANSPORTATION**

Commercial harbour facilities are located at Goderich, approximately 90 km southwest of South Bruce. This harbour is open to Great Lakes shipping from mid-May to early January, depending upon prevailing ice conditions on the lakes.

Commercial harbour facilities are also situated in Owen Sound. This harbour offers between 600 and 700 metres of dockage for large lake freighters at a depth of approximately 6.5 metres. The harbour also offers grain elevator facilities and bulk cement silos with an estimated 15,000 tonne capacity. Loading equipment is generally contained on the incoming freighters, however, equipment is available in Owen Sound through a private contractor.

### **TRUCK TRANSPORTATION**

Serving the Municipality of South Bruce are several trucking companies, including Fortney Transport and McKague Trucking located within the municipality. Others can be found close by in Brockton, such as Eidt's Transportation Services Inc. and Little Rock Farm Trucking.



---

## FINANCIAL SERVICES

### CHARTERED BANKS

The Municipality of South Bruce offers branches of several major Canadian chartered banks. Mildmay provides a branch of the Bank of Montreal, as does Teeswater. Wingham offers branches of the Bank of Montreal, the Canadian Imperial Bank of Commerce, and Toronto Dominion. The Canadian Imperial Bank of Commerce and TD Canada Trust also have branches situated in Walkerton and Hanover. The Town of Hanover offers branches of the ScotiaBank and the Royal Bank of Canada.

### COMMUNITY FUTURES DEVELOPMENT CORPORATION

Saugeen Business Development Centre, the local CFDC provides financial and technical assistance to small businesses in the Mildmay Carrick ward of the Municipality of South Bruce. The maximum loan is \$150,000. It is located at 554 7<sup>th</sup> Avenue, Hanover. The phone number is (519) 364-3694 or 1-866-761-7232 or visit our website at [www.sbdc.ca](http://www.sbdc.ca).

Bruce Community Futures Development Corporation located in Kincardine offers the same services to the Teeswater-Culross ward of the Municipality of South Bruce. Their office can be found at 281 Durham Street, Kincardine or contact them by phone at (519) 396-8141.

### BUSINESS DEVELOPMENT BANK OF CANADA

The nearest branch of this organization is located in Stratford, Ontario and can be contacted by telephone at (519) 271-5650 or toll free 1-800-265-2489.

### STOCK BROKERS

The nearest brokerage houses available to South Bruce and surrounding area is Nesbitt Burns and Gary Bean Securities Ltd. located in Hanover. RBC Dominion Securities is located in Owen Sound..

### OTHER FINANCIAL INSTITUTIONS

Farm Credit Canada has offices in Walkerton and Owen Sound. The Town of Hanover provides a branch of Meridian Credit Union. In addition, the municipality offers a wide variety of insurance and private investment agencies.

---

## COMMUNITY FACILITIES

### HEALTH CARE

South Bruce Grey Health Centre - Walkerton (formerly the County of Bruce General Hospital) offers 24 hour Emergency Service and a full range of ambulatory health services including specialists clinics, breast screening program, laboratory, diagnostic, and electrodiagnostic imaging, physiotherapy, nutritional counseling, lactation counseling, and day program to support the elderly continuing to live at home. Inpatient services include surgical, medical, chronic care, intensive care and family birthing units. New to the hospital is the CT Scanner, which was officially opened October 1, 1999. Donations from several local organizations and businesses have helped to raise funds needed to purchase the equipment.

The Wingham and District Hospital, located in Wingham, provides a wide range of health services for this area including 24 hour emergency service. A newly constructed medical clinic has proved to be an asset to the whole area. Specialist clinics are held on a regular basis to provide local service.

Hanover & District Hospital is an accredited facility offering an extensive emergency section. The day hospital program has been recently expanded to accommodate more patients with ongoing service needs including food care, palliative care, enterostomal therapy and discharge planning, hydrosound tubs, track lifts and a kinesiology gym. In addition, Hanover & District offers an ICU, a dialysis unit and obstetrical unit, long term care, ambulance service, diagnostic imaging and nutritional services. A medical clinic is located next to the hospital.

The Grey-Bruce Regional Health Centre, located near Owen Sound, is the areas largest and most modernly equipped facility. This hospital serves as a base educational and training hospital and offers services associated with hospitals situated in much larger centres.

The Bruce-Grey-Owen Sound Health Unit provides a variety of services to the Saugeen area, including a school health program, a dental health team, family planning, prenatal classes, nutrition and diet counselling and immunization programs.

CarePartners, in Hanover, and Para-Med Home Health Care, in Owen Sound, service all of Grey and Bruce counties. Both organizations offer private nursing, homemaking, childcare, Acquired Brain Injury Care and Life Line services.

The Victorian Order of Nurses, based in Owen Sound, provides a variety of home support services including mother and infant care, palliative and supportive care, insurance services, intravenous therapy and private duty (shift) nursing. These services are rendered throughout Grey and Bruce counties.

### MEDICAL CLINICS & DENTAL OFFICES

Medical clinics and dental offices are readily available in and around South Bruce. Teeswater, Walkerton, Wingham and Hanover offer general practitioners, chiropractors, denture therapists and dentists. Optometrists are located in Hanover and Walkerton.

---

## **COMMUNITY FACILITIES**

### **RETIREMENT HOMES AND COMMUNITIES**

There are presently two retirement communities and homes in the municipality. Riverview Retirement Home, in Teeswater and Valleyview Terrace Seniors' Apartments in Formosa. Nearby in Wingham, there are two facilities, Braemar Retirement Centre and Turnberry Estates.

Bruce Lea Haven is a non-profit municipal home for the aged. It is operated, in Walkerton, by the County of Bruce and offers 158 beds for residential and extended care. Also in Walkerton is Maple Court Villa, a retirement residence. Located in Hanover are the Hanover Care Centre and The Village Seniors' Community.

### **CULTURAL FACILITIES**

Mildmay, Teeswater and Walkerton have local libraries which are part of the Bruce County Library system. There are also art galleries located in Durham and Owen Sound.

In addition, surrounding communities offer residents and visitors alike a wide variety of social and cultural activities and facilities. These communities also offer a host of other organizations and societies dedicated to various social and cultural pursuits, including theatre groups, community orchestras and bands and historical societies.

### **CHURCHES**

South Bruce provides churches representing a variety of denominations, including Protestant, United, Lutheran, Baptist and Roman Catholic. A wide range of churches are found in surrounding communities.

### **SPECIAL COMMUNITY EVENTS**

Mildmay, located centrally in the Municipality, celebrates the Annual "Hanging of the Green" Festival promoted by the local Chamber of Commerce. This event kicks-off the local merchants Christmas Season and includes a Santa Claus parade, a Children's Candle Light Parade, Carol Singing, a Family Social Night at the Community Hall and the illumination of the local Rotary Club's Christmas Decorations at Rotary Park.

An annual "Santa Bop", toy show and a number of jamborees are sponsored throughout the year by the service clubs of Teeswater and Formosa. "Soundsation", a large community choir originated in Teeswater and boasts upwards of 100 voices. An annual concert held in Teeswater attracts patrons from the whole area and beyond, and also entertains in neighbouring communities.

### **COMMUNITY SERVICE CLUBS**

Community service clubs available to South Bruce residents include local chapters of the Rotary Club, Lions and Lioness' Clubs, Optimists, Kinsmen, Kinettes, Masonic Lodge, Knights of Columbus and Horticultural Societies in Formosa, Mildmay and Teeswater.

---

## COMMUNITY FACILITIES

### YOUTH GROUPS

The Municipality has developed a number of groups and organizations representing a variety of sports clubs and youth groups. Some of these associations include hockey, skating, baseball, swimming, soccer, archery and broomball clubs as well as local chapters of Scouts, Cubs, Beavers, Girl Guides and Brownies.

### RECREATIONAL ACTIVITIES AND FACILITIES

The Municipality of South Bruce's organized recreational needs are largely serviced by the communities of Mildmay, Teeswater, Formosa, Belmore, Walkerton and Wingham. These communities offer Community Centre complexes and numerous organized team sports for all ages. Some of these activities include minor hockey and baseball, figure skating, aerobics, swimming, soccer, archery and tennis. There are two outdoor swimming pools in the municipality offering Red Cross swimming lessons. Park facilities are located in Formosa (Formosa Lion's Park) and Mildmay (Mildmay Rotary Park).

In addition, the Municipality is ideal for other recreational activities such as two cross-country skiing trails at the Bruce County Forest Property and Falconer's on Concession 2 Culross, and active snowmobiling clubs and curling at the Teeswater Curling Club. The Otter Creek, which is located in Mildmay-Carrick, is an attractive fishing locale, offering Brook Trout, Brown Trout and Rainbow Trout. The nearby Lakeshore communities of Port Elgin and Southampton are host to two popular fishing derbies held annually in May and July and a number of charter boats operate out of both Southampton and Port Elgin during the summer months.

Bruce and Grey Counties have a multitude of trail experiences available, from snowmobile trails, bike paths and walking trails along the Lake Huron and Georgian Bay shorelines, through unique habitats of the Bruce Peninsula, to inland forests and waterways of Saugeen Country and the Beaver Valley. The rich natural diversity of these two Counties has been imprinted by a variety of human activities on the landscape, creating a tapestry of trail experiences ranging from community trail systems such as the Georgian Trail, all the way to the world re-nowned Bruce Trail along the Niagara Escarpment. Within the Municipality of South Bruce, visitors can access the trails network 4.3 km west of the Village of Teeswater just off County Road 16 on sideroad 25 of Culross Township. This property offers a variety of easy activities, including walking/hiking, cross-country skiing, and snowshoeing. The trails pass through upland hardwoods and hemlock lowlands. A cold-water stream also winds its way through the property.

---

## **COMMUNITY RETAIL FACILITIES**

### **SHOPPING CENTRES**

The Municipality of South Bruce is centrally located and within a short drive of a number of regional and local shopping centres. The downtown areas of Mildmay, Teeswater, Walkerton and Hanover offer a wide variety of retail and personal service outlets. In addition, South Bruce is within a two-hour drive of London, Kitchener-Waterloo, and Guelph, all of which have regional shopping centres.

### **DEPARTMENT STORES**

The Municipality is within a short drive to a number of communities which provide a variety of discount department stores. The nearby Wingham, Hanover and Walkerton offer several stores including Zellers, Stedmans, and Wal-Mart.

### **GROCERY STORES**

South Bruce's grocery shopping needs are met by a number of markets in local communities. Hart's Market can be found in Teeswater. Mildmay is home to Stewart's Country Market, and Pharmacy, and incorporates an L.C.B.O. under the same roof. In nearby Walkerton, Murphy's Value-Mart and Wright's Foodland serve the municipality. Wingham also provides local grocers, such as Dean's Valu-Mart and Wingham Foodland.

---

## COMMUNICATION MEDIA

### **Newspapers**

Residents of the Municipality of South Bruce have a number of local publications available. The community is serviced primarily by the Mildmay Town & Country Crier. The Walkerton Herald Times reports the local news in Brockton, Hanover, South Bruce and other surrounding communities in southern Bruce County. Additional weekly newspapers include the Wingham Advance Times and the Lucknow Sentinel.

A variety of national and regional papers are also available within the municipality, among them the Globe & Mail, National Post, Toronto Star, London Free Press and the Kitchener-Waterloo Record.

### **Television**

A-Channel broadcasting from London and CKCO TV, from Kitchener report area news on a regional basis.

Persona Communications offers cable TV service to select areas of South Bruce.

### **Radio**

South Bruce is served by Bayshore Broadcasting which runs CFOS 560 AM, MIX 106 (106.5 FM), Country 93 (93.7 FM), 97.7 & 98 THE BEACH, as well as CKNX 920 AM and 101.7 FM from Wingham. CBC Radio is also available on 96.8 FM.

### **Postal and Courier Services**

South Bruce is served by several local post offices located in Mildmay, Teeswater and Walkerton. These offices offer Priority Post, a postal courier network service offering next day delivery to points within Ontario.

Courier services available include Federal Express Canada, DHL Express Canada, and Purolator Courier. All of these agencies offer local, national and international service.

### **Internet Service Providers**

South Bruce is well serviced by several Internet service providers including locally, Bruce Telecom, and Wightman Internet. All residents of the municipality have access to the Internet without having long distance charges.

---

## EDUCATION

### PRIMARY AND SECONDARY SCHOOLS

#### PUBLIC

Primary Schools
Hillcrest Central School (Teeswater)
Mildmay-Carrick Public School (Mildmay)

Secondary Schools
F.E. Madill Secondary School (Wingham)
Walkerton District Secondary School (Walkerton)

#### SEPARATE

Primary Schools
Immaculate Conception (Formosa)
Sacred Heart Elementary (Mildmay)
Sacred Heart (Teeswater)

Secondary Schools
Sacred Heart High School (Walkerton)

### POST SECONDARY FACILITIES

The nearby Owen Sound Campus of Georgian College offers a full schedule of extensive college-level education programs. This facility is at most an hour's commute from South Bruce.

Universities and colleges are located in Barrie, Guelph, Kitchener, London, Toronto and Waterloo and are within a 2 hour drive from the Municipality of South Bruce.