

---

# MUNICIPALITY OF ARRAN-ELDERSLIE



## *COMMUNITY PROFILE*

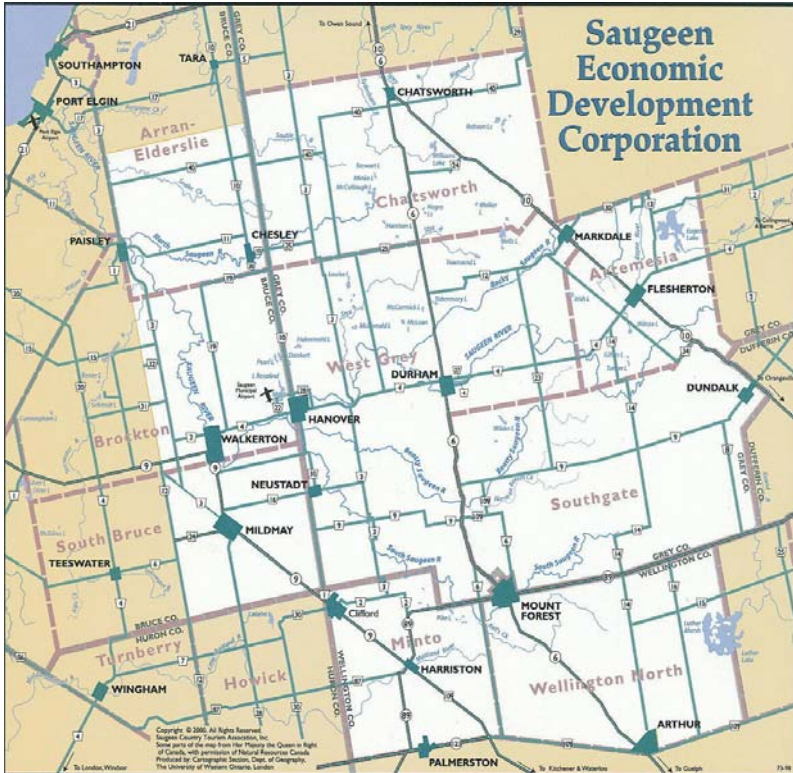


**SAUGEEN**  
**ECONOMIC DEVELOPMENT CORPORATION**  
**A Community Futures Development Corporation**  
554 7<sup>th</sup> Avenue, Hanover, Ontario, N4N 2J7  
Tel (519) 364-3694 Fax (519) 364-6384  
[www.sbdc.ca](http://www.sbdc.ca)



## LOCATION

The Municipality of Arran-Elderslie is located in southern Bruce County, along the eastern boundary separating Grey and Bruce. The Municipality contains some of the best farmland the County has to offer. Arran-Elderslie is a short drive on excellent roads from the Lake Huron shore and is within a one-half hour drive from Owen Sound, the Grey-Bruce Region's largest centre.



**Highway Distances from  
Arran-Elderslie to Major Centres**

	km	mile
Windsor/Detroit.....	375	235
Sarnia/Port Huron...	240	150
London.....	175	110
Kitchener.....	130	80
Hamilton.....	190	120
Fort Erie/Buffalo...	285	180
Toronto.....	205	125
Barrie.....	130	80
Oshawa.....	250	155
Ottawa.....	605	375
Montreal.....	750	465

\*\* Note: Above map does not highlight the wards of Arran, Tara, Paisley

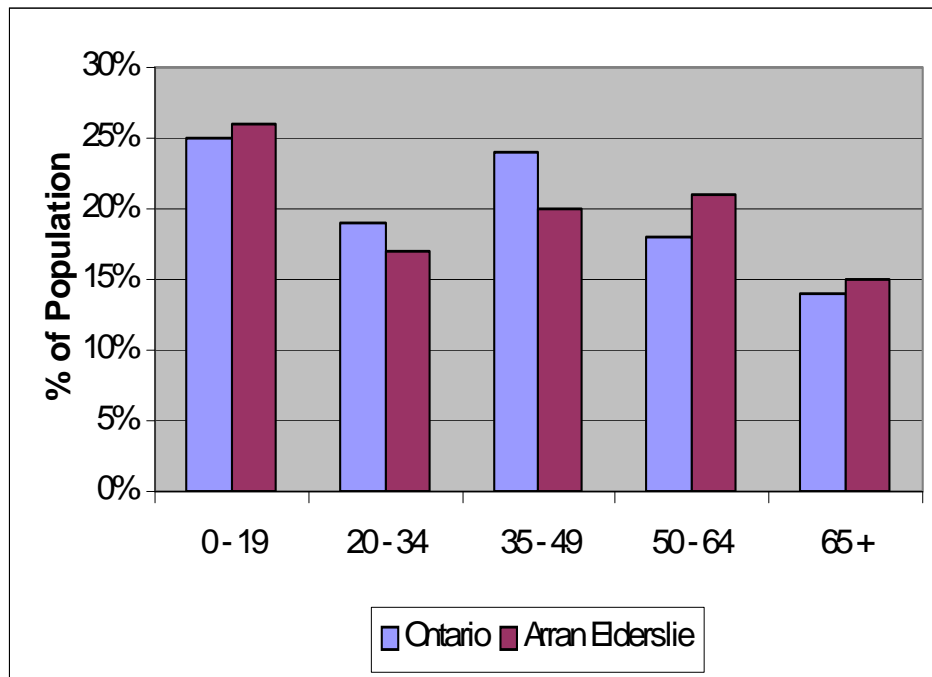
Arran-Elderslie is within 1½ hours of Highways #400 and #401, the Province's main controlled-access thoroughfare and link between major centres in Canada and the United States. In addition, the community is close to both the Saugeen Municipal Airport and the newly constructed Billy Bishop Memorial Airport at Owen Sound. Owen Sound also offers Great Lakes port and shipping facilities, as does the Town of Goderich situated approximately 110 kilometres to the southwest.

# POPULATION

## POPULATION BY FIVE-YEAR AGE GROUPS AND GENDER

Age Group	Both Genders	Male	Female
0 - 4	365	180	185
5 - 9	375	180	195
10 - 14	510	245	265
15 - 19	525	275	250
20 - 24	400	200	200
25 - 29	380	200	180
30 - 34	355	195	160
35 - 39	360	165	195
40 - 44	500	250	250
45 - 49	505	245	260
50 - 54	525	245	280
55 - 59	510	270	240
60 - 64	400	210	190
65 - 74	550	260	290
75+	480	200	280
<b>Total Pop</b>	<b>6,750</b>	<b>3,330</b>	<b>3,415</b>

## POPULATION COMPARISON TO ONTARIO BY AGE GROUP



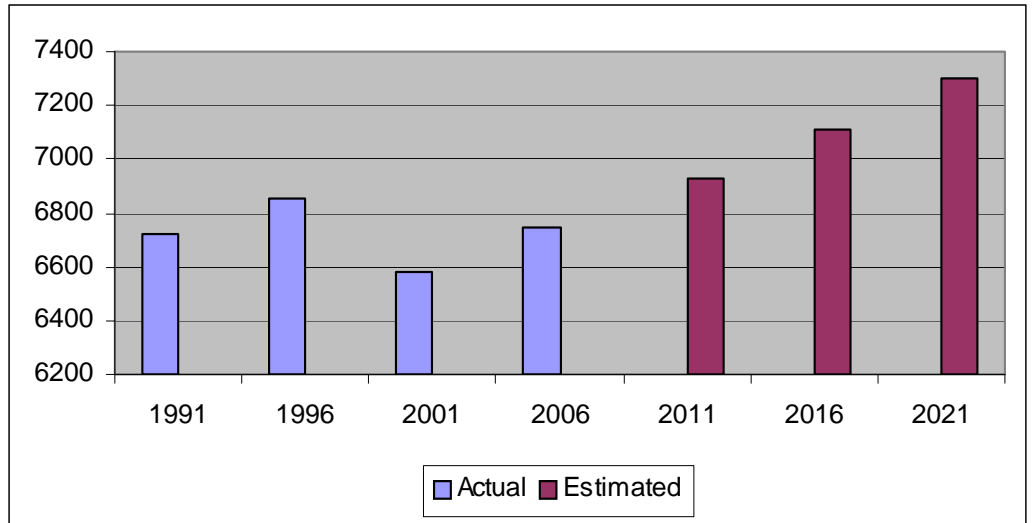
Source: Statistics Canada 2006

---

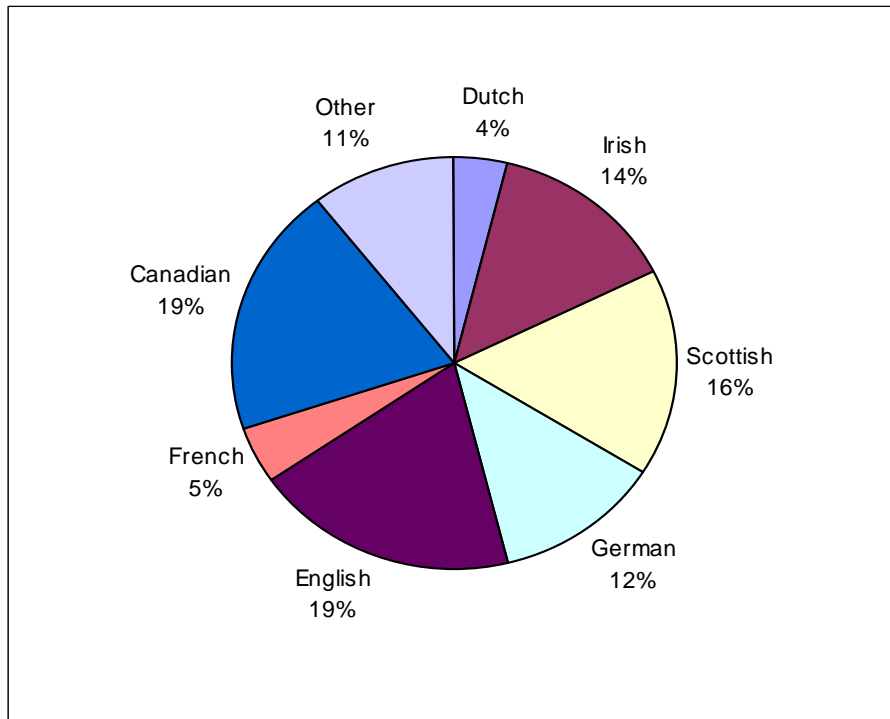
# POPULATION

## POPULATION GROWTH

1976.....	6,267
1981.....	6,252
1986.....	6,235
1991.....	6,718
1996.....	6,851
2001.....	6,577
2006.....	6,750
2011.....	6,928 est.
2016.....	7,110 est.
2021.....	7,297 est.



## ETHNIC ORIGIN

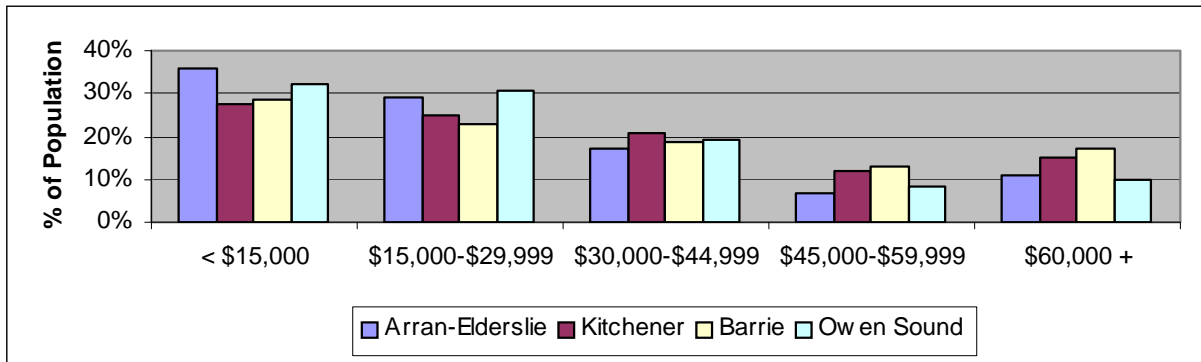


Source: Statistics Canada 2006

# INCOME

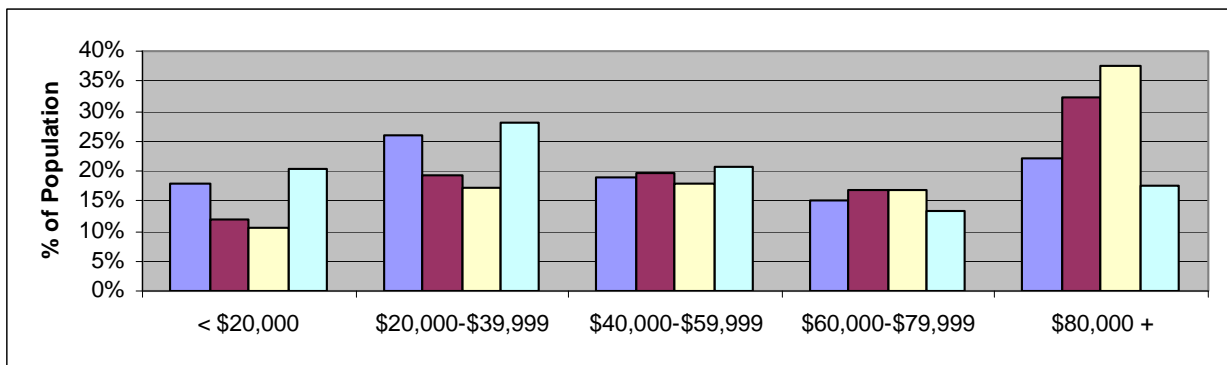
## TOTAL INCOME BY GENDER AND INCOME GROUP

Income Group	Arran-Elderslie			Kitchener	Barrie	Owen Sound
	Male	Female	Total	Total	Total	Total
Under \$15,000	805	1,080	1,890	43,125	27,430	5,390
\$15,000 - \$29,999	640	870	1,500	39,065	21,680	5,155
\$30,000 - \$44,999	495	385	890	32,880	17,610	3,215
\$45,000 - \$59,999	260	95	360	19,230	12,135	1,365
\$60,000 and over	420	155	570	23,390	16,485	1,655
15+ with income	2,630	2,600	5,230	157,710	95,340	16,785
<b>Average Income</b>	<b>\$34,321</b>	<b>\$22,139</b>	<b>\$28,266</b>	<b>\$35,648</b>	<b>\$35,737</b>	<b>\$29,093</b>



## HOUSEHOLD INCOME DISTRIBUTION

Income Level	Number of Households			
	Arran-Elderslie	Kitchener	Barrie	Owen Sound
Under \$20,000	480	9,520	4,935	1,925
\$20,000 - \$39,999	675	15,460	7,955	2,620
\$40,000 - \$59,999	485	15,510	8,315	1,950
\$60,000 - \$79,999	395	13,445	7,835	1,245
\$80,000 and over	570	25,540	17,480	1,655
Total	2,615	79,485	46,515	9,380
<b>Average Income</b>	<b>\$56,547</b>	<b>\$70,620</b>	<b>\$73,134</b>	<b>\$51,952</b>



# LABOUR

## LABOUR FORCE 15 YEARS AND OVER BY INDUSTRY DIVISIONS

Industry Divisions	Total	% of Workforce	
		Arran-Elderslie	Ontario
Agriculture, Forestry Fishing and Hunting	510	14.6	1.7
Manufacturing	360	10.3	13.7
Retail Trade	385	11.0	10.9
Construction	360	10.3	5.8
Health Care and Social Assistance	320	9.2	9.3
Educational Services	215	6.2	6.6
Utilities	270	7.7	0.8
Transportation and Warehousing	150	4.3	4.7
Other Services (Except Public Administration)	170	4.9	4.6
Wholesale Trade	85	2.4	4.7
Accommodation and Food Services	175	5.0	6.3
Administrative, Support, Waste Management and Remediation Services	70	2.0	4.8
Public Administration	110	3.2	5.3
Finance and Insurance	65	1.9	4.8
Professional, Scientific and Technical Services	105	3.0	7.2
Arts, Entertainment and Recreation	95	2.7	2.1
Information and Cultural Industries	15	0.4	2.6
Real Estate and Rental and Leasing	15	0.4	1.9
Management of Companies and Enterprises	0	0	0.1
Mining and Oil and Gas Extraction	10	0.3	0.4
<b>Total Labour Force</b>	<b>3,490</b>	<b>100.0</b>	<b>100.0</b>

## LABOUR FORCE 15 YEARS AND OVER BY OCCUPATION AND GENDER

Occupation	Male	Female	Total
Trades, Transport and Equipment Operators and Related Occupations	750	35	790
Sales and Service Occupations	210	545	750
Occupations Unique to Primary Industry	455	100	555
Business, Finance and Administration Occupations	60	415	475
Occupations Unique to Processing, Manufacturing and Utilities	125	90	220
Management Occupations	135	50	185
Health Occupations	30	150	180
Social Science, Education, Government Service and Religious Occupations	30	155	185
Natural and Applied Sciences and Related Occupations	65	25	95
Occupations in Art, Culture, Recreation and Sport	20	30	50
<b>Total Labour Force</b>	<b>1,885</b>	<b>1,605</b>	<b>3,490</b>

Source: Statistics Canada 2006

---

# LABOUR

## Occupations and Wage Rates

The following is a list of prevailing wage rates for standard occupations determined by the Service Canada for the Grey-Bruce-Simcoe-Muskoka area, as of December 31, 2007. These wage rates are to be considered as guidelines only and specific information should be obtained from individual employers. Please note that current minimum wage in Ontario may not be reflected in this data.

<u>Occupation</u>	<u>Prevailing Wage Range</u>		<u>Average</u>
Accounting and Related Clerks	\$12.00	\$23.42	\$17.07
Administrative Clerks	\$11.50	\$24.31	\$16.99
Automotive Mechanical Installers and Servicers	\$8.75	\$19.50	\$12.25
Bookkeepers	\$11.00	\$20.85	\$15.38
Carpenters	\$13.00	\$30.80	\$19.91
Construction Trades Helpers and Labourers	\$12.00	\$26.80	\$17.05
Cooks	\$8.75	\$16.77	\$11.41
Data Entry Clerks	\$11.01	\$23.82	\$18.04
Dental Assistants	\$15.00	\$25.16	\$17.91
Early Childhood Educators and Assistants	\$9.25	\$20.07	\$13.60
Electricians (Except Industrial and Power System)	\$12.50	\$35.00	\$21.65
Elementary School and Kindergarten Teachers	\$18.83	\$39.16	\$28.71
Food and Beverage Servers	\$7.60	\$13.65	\$9.50
General Office Clerks	\$11.00	\$22.54	\$16.10
Heavy Equipment Operators	\$15.00	\$31.00	\$20.76
Industrial Electricians	\$20.16	\$37.00	\$25.88
Janitors, Caretakers and Building Superintendents	\$9.55	\$19.90	\$14.65
Manufacturing Managers	\$17.14	\$41.26	\$27.89
Material Handlers	\$11.50	\$20.60	\$15.53
Nurse Aides, Orderlies and Patient Service Associates	\$11.80	\$20.34	\$16.32
Plumbers	\$13.00	\$29.55	\$19.84
Receptionists and Switchboard Operators	\$10.00	\$19.08	\$13.98
Registered Nurses	\$22.50	\$40.00	\$32.12
Restaurant and Food Service Managers	\$10.72	\$20.12	\$13.72
Roofers and Shinglers	\$12.30	\$22.13	\$17.35
Secondary School Teachers	\$19.01	\$41.69	\$29.37
Shippers and Receivers	\$10.00	\$18.96	\$14.46
Truck Drivers	\$13.33	\$22.50	\$17.48
Welders and Related Machine Operators	\$12.88	\$22.53	\$17.49

---

## BUSINESS IN ARRAN-ELDERSLIE

Arran-Elderslie Business Directory web site, [www.arran-elderslie.com](http://www.arran-elderslie.com)

### TRAINING AND EMPLOYMENT ASSISTANCE

**Service Canada / Ministry of Training, Colleges and Universities (MTCU)**

<http://www.ontario.ca/en/gic/004897>

**Services available at this location:**

- Answers to frequently asked questions about government services
- Referrals to government staff who can provide specialized help
- Access to government's Internet to search programs, services or staff
- Free government publications including Ontario Parks Guide, Fishing and Hunting Regulations, Power of Attorney Kits, etc
- Supply of and assistance with Application Forms for government services such as Birth and Death Certificates, Health Cards, Social Insurance Numbers, etc
- Order government publications electronically using POOL (Publications Ontario on-line), the Ontario government's virtual bookstore
- Access to Ontario Business Connects terminals or Web site to register/renew your business name, conduct a business name search and make your applications for Retail Sales Tax permit (RST), Employer Health Tax number (EHT) and register with the Workplace Safety and Insurance Board (WSIB)
- Access to [Life Events](#) information packages such as Losing Your Wallet and Getting Married
- Access to Online Government Services, including On-line Change of Address service
- Community Information and Bulletin Board
- File Landlord and Tenant Board applications
- Ministry of Labour Employment Standards Claim acceptance
- Ministry of Natural Resources Fish & Wildlife services, information and sales

For government services in Grey-Bruce call:

1 888 647-3654 Toll Free

(519) 371-6226

(519) 371-6336 Fax



---

## **Y Employment Services**

425 10<sup>th</sup> Street, Unit #7, Hanover  
(519) 364-3163

The Y Employment Services, operating locally, provides free confidential employment counselling for both youth and adults. Located in Hanover, the program includes:

- a) A RESOURCE CENTRE offering free Internet access, computers for word processing, job postings and newspapers.
- b) EMPLOYMENT COUNSELLORS who are available by appointment to help people identify career goals and offer support for a job search and assistance with resume preparation.
- c) ON THE JOB TRAINING for participants who meet program eligibility requirements.

**Saugeen Business Development Centre (SBDC)** 554 7<sup>th</sup> Avenue, Hanover  
(519) 364-3694  
[www.sbdc.ca](http://www.sbdc.ca)

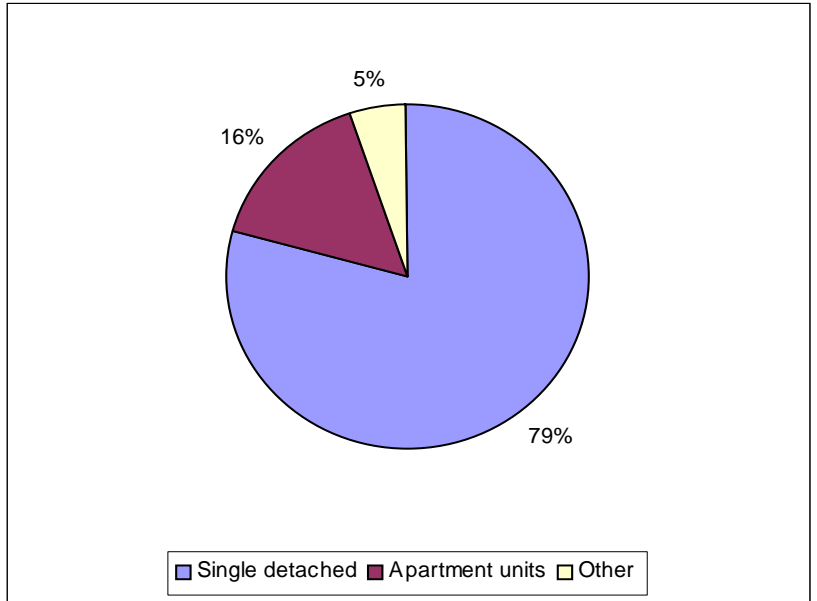
The Saugeen Business Development Centre is a federally supported not-for-profit Community Futures Development Corporation (CFDC) governed by volunteers in partnership with Industry Canada to help develop and diversify local economy by providing

- a) possible term loans up to \$150,000 for equipment, inventory, operating capital, etc;
- b) information related to demographics, labour market and training programs;
- c) information related to government programs and industrial sites;
- d) Community Profiles on participating municipalities; and
- e) quarterly economic newsletters.

# HOUSING AND CONSTRUCTION ACTIVITY

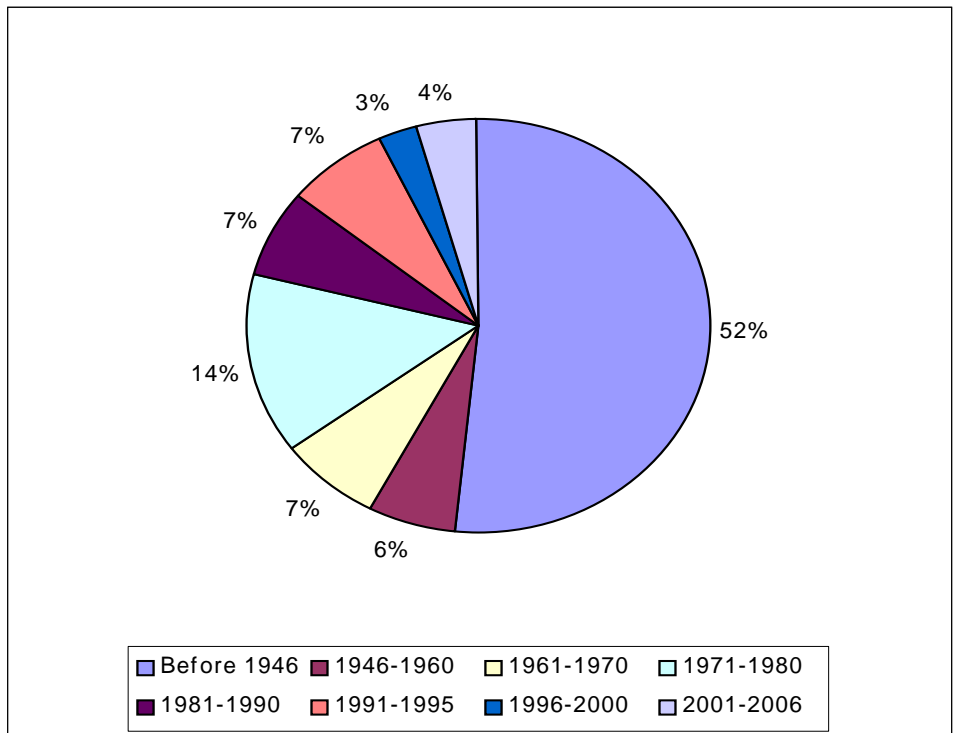
## HOUSING STOCK BY STRUCTURAL TYPE

Single-Detached	2,075
Semi-Detached	70
Row-Housing	15
Apartment, detached duplex	5
Apartment building, < 5 storeys	410
Apartment building, > 5 storeys	0
Other Single-Detached House	35
Movable Dwellings	10
<b>Total</b>	<b>2,610</b>
Owned	2,160
Rented	450



## HOUSING STOCK BY PERIOD OF CONSTRUCTION

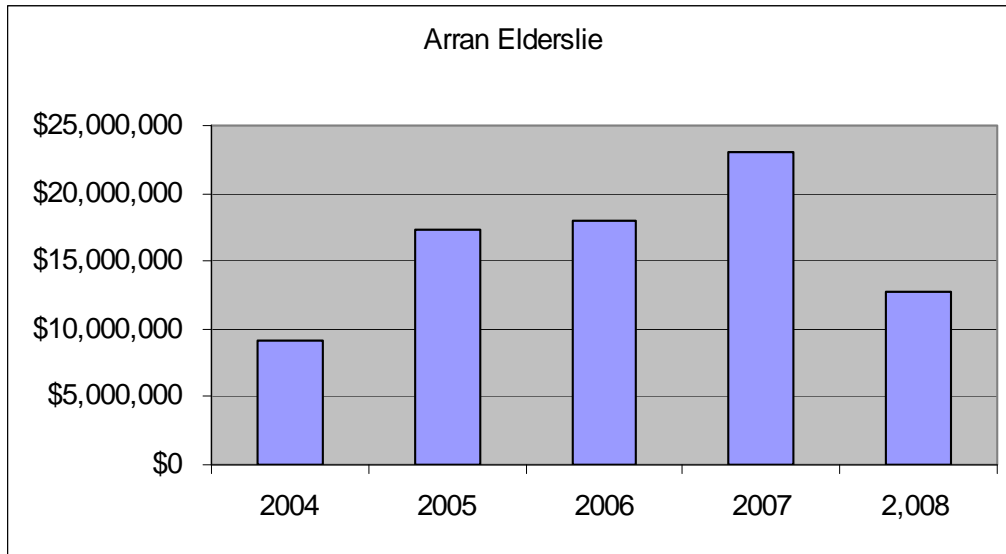
Before 1946	1,345
1946-1960	165
1961-1970	175
1971-1980	360
1981-1990	185
1991-1995	180
1996-2000	90
2001-2006	105
<b>Total:</b>	<b>2,615</b>



Source:  
 Statistics  
 Canada 2006

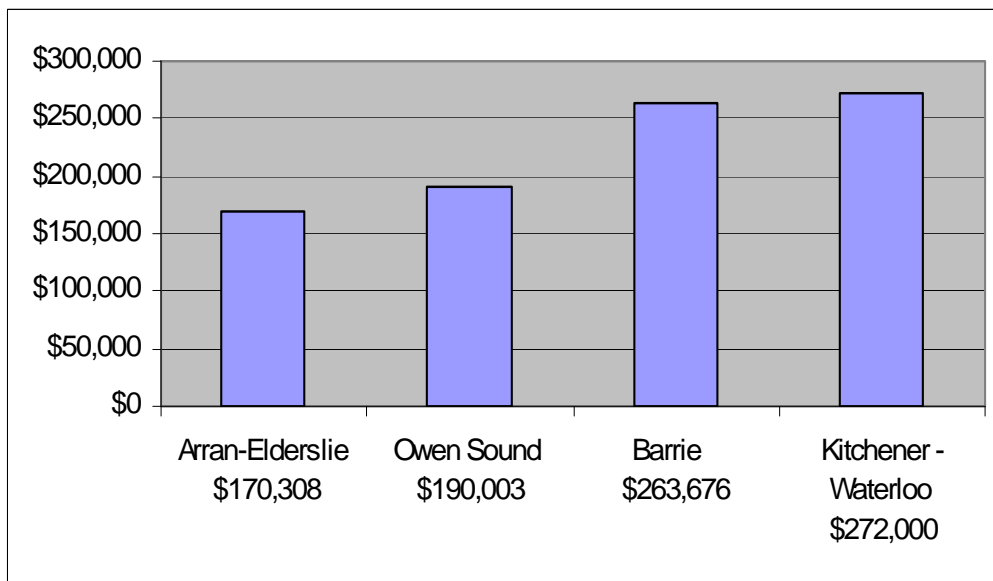
**HOUSING  
 AND  
 CONSTR  
 UCTION  
 ACTIVITY**

**BUILDING  
 PERMITS**



Source:  
 Survey of  
 Municipal  
 Offices

**AVERAGE  
 RESIDENTI  
 AL  
 SELLING PRICE FOR 2008**



---

Source: K-W Real Estate Board, Simcoe Real Estate Board and the Grey-Bruce-Owen Sound Real Estate Board

---

## LOCAL MUNICIPAL GOVERNMENT

### **Form of Government**

The Municipality of Arran-Elderslie is governed by an elected council consisting of five councillors, a Mayor and a Deputy Mayor, elected for a three year term. Day-to-day operation of the municipal offices is carried-out by staff appointed by council. The municipality prepares an annual budget and financial statement which are available to taxpayers and other interested parties upon request.

### **Tax Structure**

For information, contact Joanne Marklevitz, Treasurer at (519) 363-3039.

### **Law Enforcement**

The Municipality of Arran-Elderslie is served by the South Bruce detachment of the Ontario Provincial Police. For emergencies, call 911: for non-emergencies, call the O.P.P dispatch centre at 1-888-310-1122. The nearest local court facility is located in Walkerton.

### **Fire Protection**

The Municipality of Arran-Elderslie has three volunteer fire departments in Chesley, Paisley, and Tara. As an added measure of safety for industrial operations, 12" water mains have been installed in the industrial park in Chesley. The department offers annual inspection programs for schools, nursing homes, factories, the hospital and the community centres.

---

## POWER AND UTILITIES

### Electricity

The Municipality of Arran-Elderslie is largely served by Hydro One. Rates vary according to the type of user. For more information, please visit [www.hydroonenetworks.com](http://www.hydroonenetworks.com)

For Westario Power, please visit [www.westario.com](http://www.westario.com)

### Fuel Oil

Fuel oil is supplied to the Municipality by McCullough Fuels of Paisley and by Sumpton Sunoco and James Cavill Fuels of Chesley.

### Garbage & Industrial Waste Removal

Weekly residential and commercial garbage collections are provided by the Municipality of Arran-Elderslie. No industrial waste is collected. There is a two-bag limit. Garbage collection is contracted out to private company. Bi-weekly residential blue box collection is provided. Recyclable collection is provided by the Bruce Area Solid Waste Recycling Association, of which the Municipality of Arran-Elderslie is a member. Bag tags are \$3 in excess of the two-bag limit for residential and commercial. Tipping fees apply to tires, roof material, demolition material, refrigerator goods and for entry on closed days.

### Water

The Municipality enforces watering restrictions all year in all three service areas in the interest of water conservation. Piped municipal water is supplied to Chesley from two wells. Pumping capacity is currently 650 imperial gallons per minute and the capacity of the reservoir is 600,000 imperial gallons. Peak consumption is approximately 220,000 imperial gallons per day.

Paisley has one water treatment plant, which can produce 250 gallons per minute and the capacity of the reservoir is 500,000 imperial gallons. The Municipality is approved to draw 100,000 imperial gallons per day from the Teeswater River. Water metres are in all homes and commercial buildings in Paisley.

Piped municipal water is supplied in Tara from two wells. Pumping capacity is 130 imperial gallons per minute and the capacity of the reservoir is 125,000 imperial gallons. Peak consumption is approximately 195,000 imperial gallons per day.

### Sewer

Chesley is serviced by sanitary sewers. Treatment consists of a three celled aerated lagoon and the system capacity is designed to service 2,618 persons equivalent.

Paisley is serviced by sanitary sewers. Treatment consists of a Class II sewage treatment plant designed to service 1,000 persons equivalent. The capacity is sufficient to service the existing population.

Tara is serviced by sanitary sewers except for 17 residential lots and the Mennonite Church/School to the east of the CN Rail line. Treatment consists of a two-celled lagoon system. The capacity is designed to service a population of 1085, plus a school population of 500. There are presently 857 users.

Please contact the Municipality for current rates

---

## INDUSTRIAL SERVICES

### Sites Available

For more information on industrial sites available, please contact the municipality at (519) 363-3039.

## TRANSPORTATION

### Air Transportation

The Saugeen Municipal Airport, located just outside Hanover on County Road #2, is the Saugeen Community's key to the provincial airport network, offering quality service to both recreational and commercial traffic.

Runway 01/19 is approximately 4,000 feet in length and 75 feet in width. The secondary runway 09/27 is approximately 2,500 feet in length and 50 feet in width. Both runways are maintained year round and service is available 365 days of the year between 9:00 a.m. and 5:00 p.m. The professionally maintained runways are capable of servicing and accommodating small to midsize corporate jets and larger commuter-type turbo-prop aircraft. Charters and flight training are available as well as food and catering on Thursdays and Fridays. The Saugeen Municipal Airport also offers Canada Customs clearance on an as needed basis.

For more information, phone (519) 364-3220, or fax (519) 364-7733.

### Truck Transportation

Lloyd Hutton Transport Ltd. is located in Paisley and hauls livestock and freight to various points in Canada and the United States. There are a number of other area transport services available to the Municipality of Arran-Elderslie

### Water

Commercial harbour facilities are located at Goderich, approximately 110 km southwest of Arran-Elderslie. This harbour is open to Great Lakes shipping from mid-May to early January, depending upon prevailing ice conditions on the lakes.

Commercial harbour facilities are also situated in Owen Sound. This harbour offers between 600 and 700 metres of dockage for large lake freighters at a depth of approximately 6.5 metres. The harbour also offers grain elevator facilities and bulk cement silos with an estimated 15,000 tonne capacity. Loading equipment is generally contained on the incoming freighters, however, equipment is available in Owen Sound through a private contractor.

---

## FINANCIAL SERVICES

### **Chartered Banks**

The municipality is well served by a number of area communities. Chesley offers a branch of the Canadian Imperial Bank of Commerce (CIBC) as does the Town of Southampton. Tara offers a branch of the Bank of Montreal. Paisley features a branch of the Royal Bank of Canada. Nearby Port Elgin offers branches of the CIBC, TD Canada Trust, and the Bank of Nova Scotia. Owen Sound is host to branches of the Royal Bank, CIBC, Bank of Montreal, Bank of Nova Scotia and TD Canada Trust. Other branches of major chartered banks can be found a short drive away in Hanover and Walkerton.

### **Trust Companies**

Several trust organizations are available in Owen Sound.

### **Community Futures Development Corporation**

The Saugeen Business Development Centre provides financial and technical assistance to small businesses. The maximum loan is \$150,000. It is located at 554 7th Avenue, Hanover, and can be reached by phone (519) 364-3694 or visit the website [www.sbdc.ca](http://www.sbdc.ca)

### **Business Development Bank of Canada**

The nearest branch of this organization is located in Stratford, Ontario and can be contacted at telephone (519) 271-5650 or 1-800-265-2489.

### **Stock Brokers**

The nearest brokerage houses available to Arran-Elderslie is Nesbitt Burns and Gary Bean Securities Ltd, situated in Hanover. Others are located in Owen Sound and includes RBC Dominion Securities.

### **Other Financial Institutions**

The Saugeen Community Credit Union is located in the hamlet of Elmwood, a short drive south of Chesley. The main local branch of this organization is located in Durham. The Ontario Civil Servants Credit Union offers a branch in Owen Sound. The Meridian Credit Union Limited offers a branch in Hanover. The Farm Credit Canada has offices in both Walkerton and Owen Sound. In addition, Chesley, Tara, Paisley and surrounding communities offer a wide variety of insurance and private investment agencies.



---

## COMMUNITY FACILITIES

### Health Care

South Bruce Grey Health Centre - Chesley (formerly the Chesley & District Memorial Hospital) offers 24 hour Emergency Service and a variety of ambulatory health services including specialty clinics, laboratory, diagnostic, and electrodiagnostic imaging, physiotherapy and dietary counseling. Day Program supports the elderly living in their homes. Inpatient services include medical and chronic beds.

The Grey-Bruce Regional Health Centre, located near Owen Sound, is the areas largest and most modernly equipped facility. This hospital serves as a base educational and training hospital and offers services associated with hospitals situated in much larger centres.

The Bruce-Grey-Owen Sound Health Unit provides a variety of services to the Saugeen area, including a school health program, a dental health team, family planning, prenatal classes, nutrition and diet counselling and immunization programs.

Para-Med Home Health Care services all of Grey and Bruce counties. Operating out of Owen Sound, Para-Med offers private nursing, homemaking, childcare, Acquired Brain Injury Care and Life Line services.

The Victorian Order of Nurses, based in Owen Sound, provides a variety of home support services including mother and infant care, palliative and supportive care, insurance services, intravenous therapy and private duty (shift) nursing. These services are rendered throughout Grey and Bruce counties.

### Medical Clinics & Dental Offices

There are medical clinics in Chesley and Paisley, one chiropractic clinic in Chesley and one practising dentist operating in Chesley.

### Retirement Homes and Communities

Nursing services are available through VON (Victoria Order of Nurses). There are presently two full-service nursing homes and one retirement home in the Town of Chesley, Brittany Villa, Elgin Abbey and Parkview Manor.

---

## COMMUNITY FACILITIES

### **Cultural Facilities and Events**

There is a growing arts community within the Municipality and increasing art studios, related businesses and art events developing almost yearly. Chesley, Paisley and Tara have local libraries, which are part of the Bruce County Library system. Chesley is the home of the Bijou Theatre, which is operated by the Chesley Community Players who perform all year. The Treasure Chest Museum is open during the summer in Paisley and by appointment the rest of the year.

In addition, surrounding communities offer residents and visitors alike a wide variety of social and cultural activities and facilities. The nearby communities of Durham, Hanover and Walkerton offer movie theatres, art galleries and museums celebrating the region's rich agricultural heritage. These communities also offer a host of other organizations and societies dedicated to various social and cultural pursuits, including theatre groups, community orchestras and bands and historical societies. The City of Owen Sound offers excellent social and cultural facilities not often found in a community of this size. Facilities include the Tom Thomson Memorial Art Gallery, the Owen Sound Public Library, the Grey Roots Museum & Archives, the Marine-Rail Museum and the Billy Bishop Heritage Home.

### **Churches**

The municipality is home to churches representing a variety of denominations, including Presbyterian, Roman Catholic, Pentecostal, Lutheran, United, Anglican, Baptist, Mennonite and Missionary.

### **Community Service Clubs**

The Municipality offers a wide variety of community service organizations, including Rotary, Kinsmen, Kinettes, Independent Order of Oddfellows, Optimists, Masonic Lodge, Legions, Women's Institutes, Horticultural Societies and Senior's Clubs.

### **Youth Groups**

Included in the Municipality are Beavers, Cubs & Scouts, Brownies & Guides and Play-time for preschoolers. Various churches also have youth groups for people 11 -19 years of age.

### **Special Community Events**

The Municipality has a wide range of events in Chesley, Paisley and Tara, including fall fairs, baseball tournaments, flower shows, annual beef barbeques, spaghetti nights, fish fry's, Bavarian Night, art and craft shows, New Year's Eve dances and family nights, annual community festivals, canoe races, Christmas parades and Agri-Fairs.

### **Recreational Activities and Facilities**

The three urban areas have many facilities, including pools, camping, fishing, curling, tennis, hockey, figure skating, public skating, roller skating, soccer, basketball, ringette, summer playground, fitness classes, weekly bingo, ball hockey, and karate. There are organized leagues for ball and hockey.

---

## COMMUNITY RETAIL FACILITIES

There are more than 400 commercial and business establishments in the Municipality of Arran-Elderslie.

### **Shopping Centres**

There are shopping centres in each of the urban areas of Chesley, Paisley and Tara, which contain a large number and variety of retail and personal service shops. Further, the Municipality is centrally located within a short drive on good roads to a number of regional and local shopping malls.

### **Department Stores**

Arran-Elderslie's immediate needs are served by a Stedman's VS Department Store in Chesley. There are Sears outlets in each of Chesley, Paisley and Tara.

### **Grocery Stores**

All three urban areas have grocery stores.

---

## COMMUNICATION MEDIA

### **Newspapers**

Published monthly in Paisley, is the community magazine, the Paisley Advocate. The Post, a new free weekly publication, features news coverage from Chesley, Durham, Hanover and Walkerton. The Beacon Times and the Shoreline News are published in Port Elgin. In addition, the Sun Times is published daily in Owen Sound. The Life and Times of Tara is published quarterly.

A variety of national and regional papers are also available within the Municipality, among them the Toronto Star, London Free Press and the Kitchener-Waterloo Record.

### **Television**

CKNX TV, broadcasting from London, is part of the CHUM Broadcasting Corporation. CKCO TV, from Kitchener, also reports area news on a regional basis.

Persona offers cable TV service to select areas of Arran-Elderslie.

### **Radio**

Arran-Elderslie is served by Bayshore Broadcasting which runs CFOS 560 AM, MIX 106 (106.5 FM), Country 93 (93.7 FM), 97.7 & 98 THE BEACH, as well as CKNX 920 AM and 101.7 FM from Wingham. CBC Radio is also available on 96.8 FM.

### **Postal and Courier Services**

Arran-Elderslie is served by several post offices located in the communities of Allenford, Chesley, Paisley, Port Elgin, Southampton, and Tara. These offices offer Priority Post, a postal courier network service offering next day delivery to points within Ontario.

Courier services available to the Arran-Elderslie area include Federal Express Canada and Purolator Courier. Both offer local, national and international service.

### **Internet Service Providers**

The area is well serviced by Internet service providers including BMI Internet and Wightman Internet, and a number of others. All residents of Arran-Elderslie have access to the Internet without having long distance charges.

---

## EDUCATION

### Primary and Secondary Schools

#### PUBLIC:

Primary Schools
Arran-Tara Elementary School (Tara)
Kinghurst Community School (Chesley)
Paisley Central School (Paisley)

Secondary Schools
Chesley District High School (Chesley)
Saugeen District Secondary School (Port Elgin)
Walkerton District Secondary School (Walkerton)

#### SEPARATE:

Primary Schools
Holy Family Separate School (Hanover)
St. Joseph's School (Port Elgin)

Secondary Schools
Sacred Heart High School (Walkerton)
St. Mary's High School (Owen Sound)

### Post Secondary Facilities

The nearby Owen Sound Campus of Georgian College offers a full schedule of extensive college-level education programs. This facility is at most a 50-minute commute from the Municipality of Arran-Elderslie.

Universities and colleges are located in Barrie, Guelph Kitchener, London, Toronto and Waterloo and are within a two hour drive from the Municipality of Arran-Elderslie.